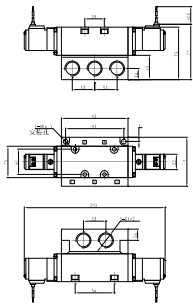


3 Positions/5 Ports Solenoid Valve



● FT3542-15C

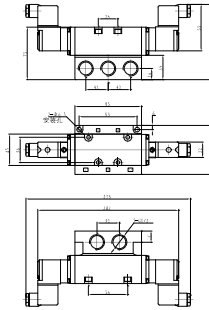
Lead Wire



FT Series Solenoid Valve

● FT3542-15CL

DIN Terminal

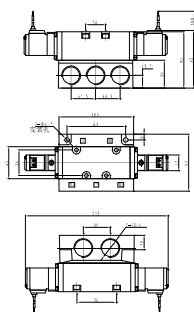


3 Positions/5 Ports Solenoid Valve



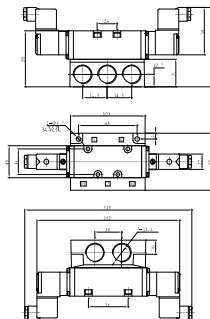
● FT3562-20C

Lead Wire



● FT3562-20CL

DIN Terminal

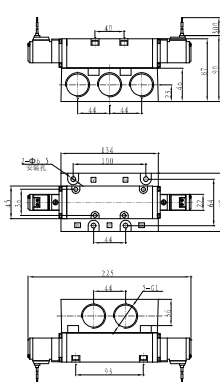


3 Positions/5 Ports Solenoid Valve



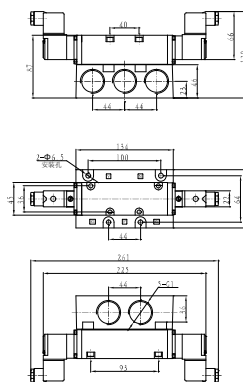
● FT3582-25C

Lead Wire



● FT3582-25CL

DIN Terminal



FG Series Solenoid Valve



● Character

It has the characteristics of low-consumption power and central exhaust of guiding valve and main valve, with small dimension, large flow, handsome shape, and quick action. It can be installed in integration, with good resistance to abrasion and long service life.

● Ordering Code

FG	25	2	1	08	L	AC220V
Series	Function	Connection Code	Control Form	Pipe size	Plug Mode	Standard Voltage
	25 : 2 Positions/5Ports	1 : 1/8 2 : 1/4 3 : 3/8 4 : 1/2 6 : 3/4 8 : 1	1 : Single Solenoid Operated 2 : Double Solenoid Operated	06 : G1/8 08 : G1/4 10 : G3/8 15 : G1/2 20 : G3/4 25 : G1	No Mark ; Lead Wire L : DIN Terminal with Light	DC24V AC110V AC220V

■ Solenoid specifications

Allowable Voltage Range	±10%
Insulated Grade	Class B or Equivalent
Response Time	0.05 Sec
Power Consumption	AC Start : 5.6VA, Keep on ; 5.4VA
	DC 4W
Surge Voltage Suppressor	AC:Varistor, DC:Diode
Indicator Light	Neon Light, LED

● Maintenance Notice

1. Be sure to check up the valve before installation.
2. Before installation, please confirm the voltage connection and direction of the air flow are right.
3. Notice to be dustproof. It's best to install a silencer or speed control silencer in front of solenoid valve.
4. Metal grain, dust and oil stain in pipes and fittings must be washed neatly before connected.

■ Technical Parameter

Specification	Item	Function	Pipe Size	Nominal Diameter (mm)	Applicable Medium	Applicable Pressure Range	Operating Method	Max Action Frequency	Lubrication	Medium Temperature
FG2511-06	FG2512-06	2 Positions/5Ports	G1/8	6	Air	0.15 ~ 0.9 MPa	Internally Piloted	5 Cycles/Sec	Needless	-5 ~ 60°C
FG2521-08	FG2521-08L		G1/4	8						
FG2522-08	FG2522-08L		G1/4	8						
FG2531-10	FG2531-10L		G3/8	10						
FG2532-10	FG2532-10L		G3/8	10						
FG2541-15	FG2541-15L		G1/2	15						
FG2542-15	FG2542-15L		G1/2	15						
FG2561-20	FG2561-20L		G3/4	20						
FG2562-20	FG2562-20L		G3/4	20						
FG2581-25	FG2581-25L		G1	25						
FG2582-25	FG2582-25L	G1	25							

FG Series Solenoid Valve

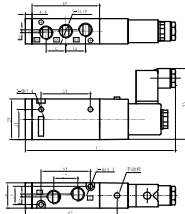
2 Positions/5 Ports Solenoid Valve



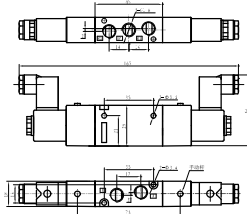
● FG2511-06

● FG2512-06

● FG2511-06



● FG2512-06



2 Positions/5 Ports Solenoid Valve

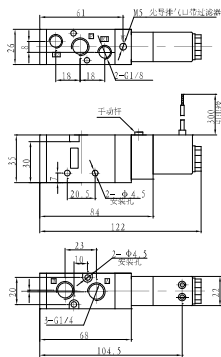


● FG2521-08

● FG2521-08L

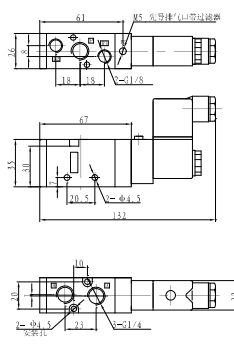
● FG2521-08

Lead Wire



● FG2521-08L

DIN Terminal



2 Positions/5 Ports Solenoid Valve

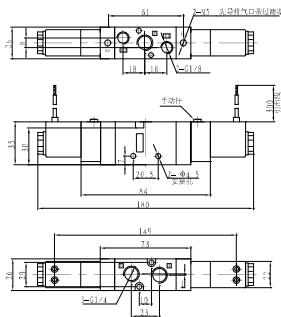


● FG2522-08

● FG2522-08L

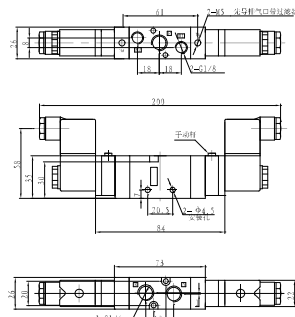
● FG2522-08

Lead Wire



● FG2522-08L

DIN Terminal



FG Series Solenoid Valve

2 Positions/5 Ports Solenoid Valve

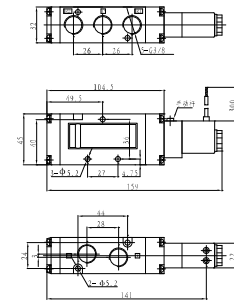


● FG2531-10

● FG2531-10L

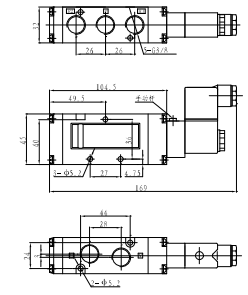
● FG2531-10

Lead Wire



● FG2531-10L

DIN Terminal



2 Positions/5 Ports Solenoid Valve

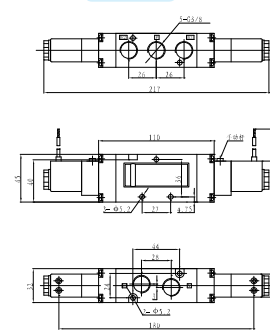


● FG2532-10

● FG2532-10L

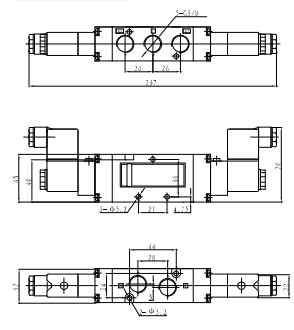
● FG2532-10

Lead Wire



● FG2532-10L

DIN Terminal



2 Positions/5 Ports Solenoid Valve

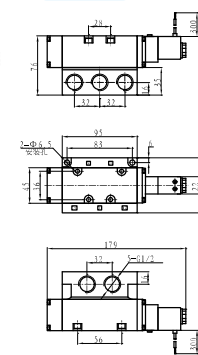


● FG2541-15

● FG2541-15L

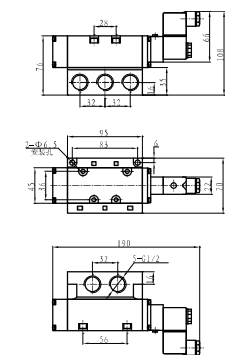
● FG2541-15

Lead Wire



● FG2541-15L

DIN Terminal



FG Series Solenoid Valve

2 Positions/5 Ports Solenoid Valve



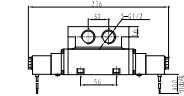
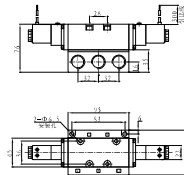
● FG2542-15



● FG2542-15L

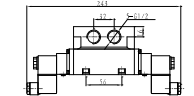
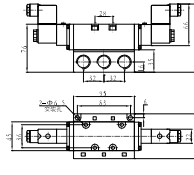
● FG2542-15

Lead Wire



● FG2542-15L

DIN Terminal



2 Positions/5 Ports Solenoid Valve



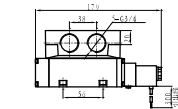
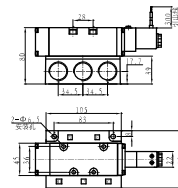
● FG2561-20



● FG2561-20L

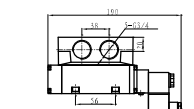
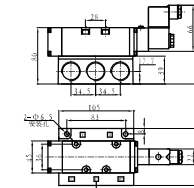
● FG2561-20

Lead Wire



● FG2561-20L

DIN Terminal



2 Positions/5 Ports Solenoid Valve



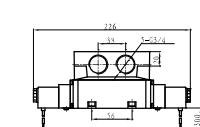
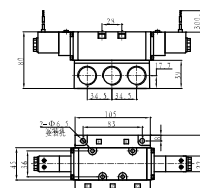
● FG2562-20



● FG2562-20L

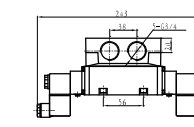
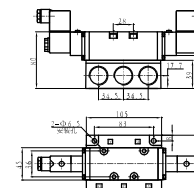
● FG2562-20

Lead Wire



● FG2562-20L

DIN Terminal



FG Series Solenoid Valve

● character

Compact, high flow, beautiful appearance, quick action and good wear resistance and long service life.

2 Positions/5 Ports Solenoid Valve



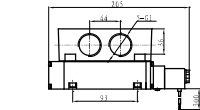
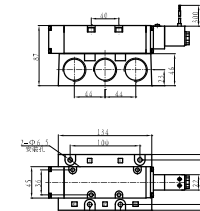
● FG2581-25



● FG2581-25L

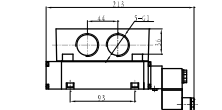
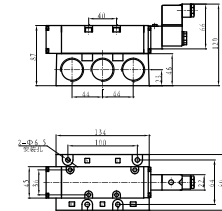
● FG2581-25

Lead Wire

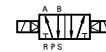


● FG2581-25L

DIN Terminal



2 Positions/5 Ports Solenoid Valve



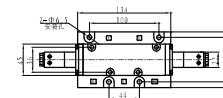
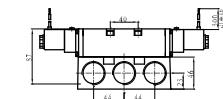
● FG2582-25



● FG2582-25L

● FG2582-25

Lead Wire



● FG2582-25L

DIN Terminal

