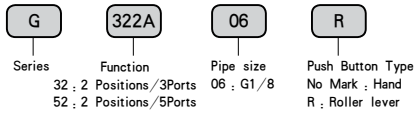


### G series Manually Valve/Mechanical Valve

#### Ordering Code



#### Character

Product design, compact, good looks, with the operating force, easy to use and so on. Pneumatic devices were widely used in control devices.

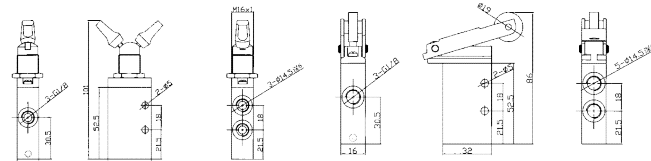
#### Technical Parameter

Item	Function	Pipe size	Nominal Diameter (mm)	Applicable Medium	Pressure Range	Operating Method	Lubrication	Medium Temperature
G322A-06	2 Positions/ 3Ports	G1/8	6	Compress Air Inert gas	0 ~ 1.0MPa	Hand	Needless	-5 ~ 60°C
G322A-06R		G1/8	6			Roller lever		
G522A-06	2 Positions/ 5Ports	G1/8	6			Hand		
G522A-06R		G1/8	6			Roller lever		

### 2 Positions/3 Ports Manually Valve/Mechanical Valve



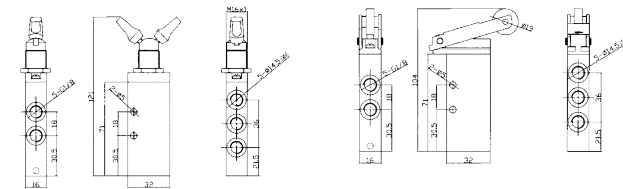
#### Figure Dimension



### 2 Positions/5 Ports Manually Valve/Mechanical Valve



#### Figure Dimension



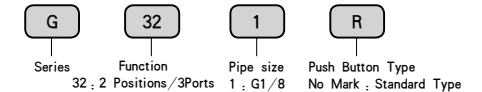
### 2 Positions/3 Ports Mechanical Valve



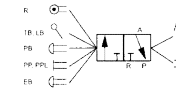
#### Technical Parameter

Specification	G321R, PP, PPL, PB, EB, TB, LB
Applicable Medium	Air
Pressure Range	0 ~ 1.0MPa
Control Method	Mechanical Control, Manually Control
Lubrication	Needless
Medium Temperature	-5 ~ 60°C
The Button's Standard Color	black : LB red : PP, PPL, PB, EB, TB
The Button's Color Available	green, black : PP, PPL, PB, TB

#### Ordering Code



#### Graphics Sign



#### Figure Dimension

