

TG series Hand Valve

● **Charatcer** Product design, compact, good looks, with the operating force, easy to use and so on. Pneumatic devices were widely used in control devices.

● **Ordering Code**

TG	25	2	1B	06	C	M
Series	Function	Connection Code	Control Form	Pipe Size	Working Mode	Working Mode
	23 : 2 Positions/3Ports 25 : 2 Positions/5Ports 35 : 3 Positions/5Ports	1 : 1/8 2 : 1/4 3 : 3/8 4 : 1/2	Hand Lever	06 : G1/8 08 : G1/4 10 : G3/8 15 : G1/2	No Mark : 2 Positions C : 3 Positions Closed Center E : 3 Positions Release Center	No Mark : Normal Type M : Multiple location installation

■ **Technical Parameter**

Item	Function	Pipe Size	Nominal Diameter (mm)	Applicable Medium	Applicable Pressure Range	Operating Method	Lubrication	Medium Temperature
Specification								
TG2311B-06	2 Positions/3 Ports	G1/8	6	Air	0 ~ 1.0MPa	Manually Control	Needless	-5 ~ 60°C
TG2321B-08		G1/4	8					
TG2511B-06	2 Positions/5 Ports	G1/8	8					
TG2521B-08		G1/4	8					
TG2521B-08M		G1/4	8					
TG2531B-10		G3/8	10					
TG2541B-15		G1/2	15					
TG3521B-08C	3 Positions/5 Ports	G1/4	8					
TG3531B-10C		G3/8	10					
TG3541B-15C		G1/2	15					

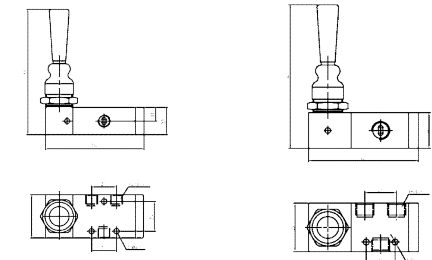
■ **Figure Dimension**

2 Positions/3 Ports Hand Valve



● TG2311B-06

● TG2321B-08

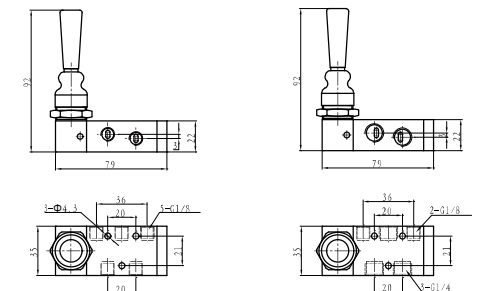


2 Positions/5 Ports Hand Valve



● TG2511B-06

● TG2521B-08



TG series Hand Valve

2 Positions/5 Ports Hand Valve

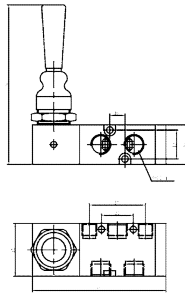


● TG2521B-08M

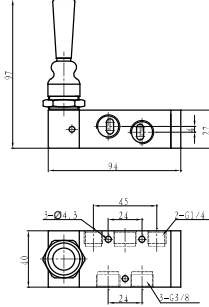


● TG2531B-10

● TG2521B-08M



● TG2531B-10



2 Positions/5 Ports Hand Valve



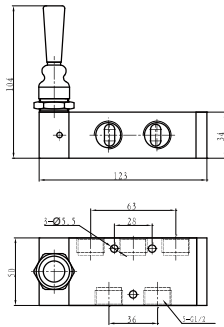
● TG2541B-15

3 Positions/5 Ports Hand Valve

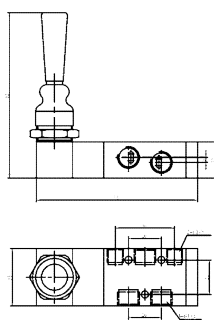


● TG3521B-08C

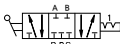
● TG2541B-15



● TG3521B-08C

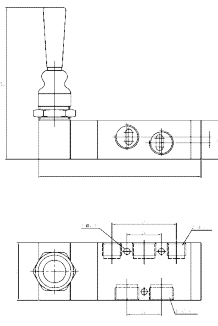


3 Positions/5 Ports Hand Valve



● TG3531B-10C

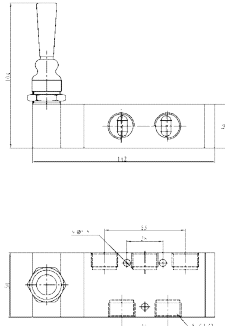
● TG3531B-10C



● TG3541B-15C



● TG3541B-15C



TG series hand valve

● **Character** Product design, compact, good looks, with the operating force, easy to use and so on. Pneumatic devices were widely used in control devices.

● Ordering Code

TG	25	2	1H	06
Series	Function	Connection Code	Control Form	Pipe size
23 : 2 Positions/3Ports	25 : 2 Positions/5Ports	1 : 1/8 2 : 1/4 3 : 3/8 4 : 1/2	Hand Lever	06 : G1/8 08 : G1/4 10 : G3/8 15 : G1/2

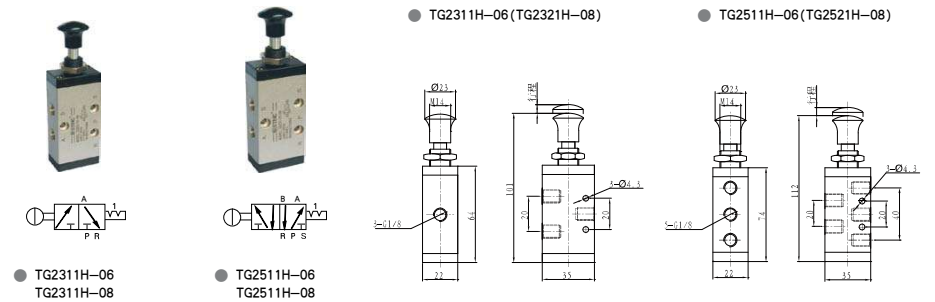
■ Technical Parameter

Item Specification	Function	Pipe Size	Nominal Diameter (mm)	Applicable Medium	Applicable Pressure Range	Operating Method	Lubrication	Medium Temperature
TG2311H-06	2 Positions/3 Ports	G1/8	6	Air	0 ~ 1.0MPa	Manually Control	Needless	-5 ~ 60°C
TG2321H-08		G1/4	8					
TG2331H-10		G3/8	10					
TG2341H-15	2 Positions/5 Ports	G1/2	15					
TG2511H-06		G1/8	6					
TG2521H-08		G1/4	8					
TG2531H-10		G3/8	10					
TG2541H-15	G1/2	15						

2 Positions/3 Ports Hand Valve

2 Positions/5 Ports Hand Valve

■ Figure Dimension



● TG2311H-06
TG2311H-08

● TG2511H-06
TG2511H-08

● TG2311H-06(TG2321H-08)

● TG2511H-06(TG2521H-08)